



## In This Issue: Landfill Gas Flares | Conference Schedule

### Solar Spark® Passive Vent Flares

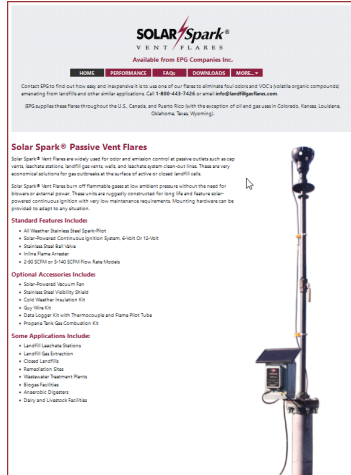
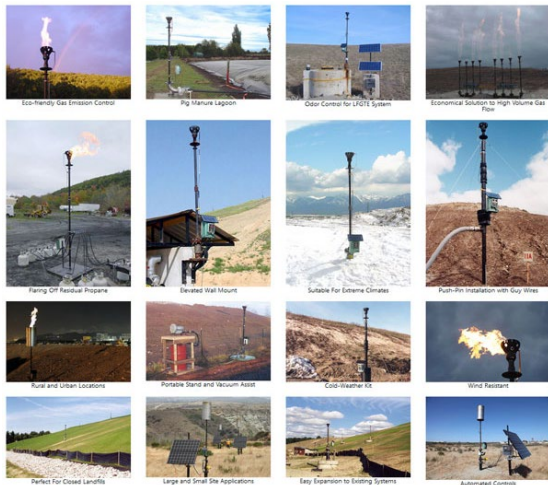
#### Is This the Flare for you?

EPG is your source for Solar Spark® Vent Flares. These flares are widely used for odor and emission control at passive outlets such as cap vents, leachate stations, landfill gas vents, wells, and leachate system clean-out lines. Below are some common questions people often ask. The answers and more can be found at [www.landfillgasflares.com](http://www.landfillgasflares.com)

**Q) How do I know if I have enough gas for the flare to work?**

**Q) What if it is cloudy or dark for several days?**

**Q) Are these flares accepted by regulatory agencies?**



[Installation Photo Gallery](#)

[Landfill Gas Flares Website](#)

To find out how easy and inexpensive it is to use one of our flares to eliminate foul odors and VOC's (volatile organic compounds) emanating from landfills and other similar applications visit [www.landfillgasflares.com](http://www.landfillgasflares.com)

#### Related Webinar

Topic: [Passive Vent Flares for Landfills](#)

Length: [9:51](#)

In this video we discuss the source of landfill gas and why flares might be the right solution to manage it. You'll learn how our SolarSpark & LTL Biogas flares might be suitable for your application.

[Watch Webinar](#)

*If you have any questions about the information above, please call and ask to speak to one of our Application Specialists 1-800-443-7426.*

### LTL Biogas Flares



LTL Biogas Flares are widely used for odor and emission control when vacuum assist is required, such as cap vents, leachate stations, or from gas outbreaks at the surface of active or closed landfill cells.

These units are ruggedly constructed for long life and feature solar-powered continuous ignition with very low maintenance requirements. Skid and trailer mounting options are available to adapt to any situation.



[Trailer Mounted Biogas Flare](#)

[LTL Biogas Website](#)

Standard Flare Features:

- Easy Assembly and Maintenance with Pivoting Column Design
- Solar or Line Powered Electronic Ignition - LPG Flame Pilot Also Available
- 5-750 SCFM Biogas Combustion Capacities
- Excellent Combustion Efficiency
- High Temperature Thermocouple with Programmable Data Logger
- Low Pressure, Easy Cleaning Flame Arrester Constructed with Aluminum Body and 304 Stainless Steel Internals
- Carbon Steel Riser Pipe
- Hot Dip Galvanized
- Skid or Trailer Mounted; Easily Portable
- Complies with 40 CFR 60.18

#### Related Webinar

Topic: [Skid Mounted Flare Assembly](#)

Length: [11:31](#)

This video covers the 28 easy-to-follow steps to skid mounted flare assembly. We discuss & guide you through the instructions to assemble a skid mounted solar flare from EPG.

[Watch Webinar](#)

### Industry Events

*This list of events is updated each month.  
We will do our best to keep the list accurate when published.*

**Oct 2-4 Iowa Recycling and Solid Waste Management Conference**  
Waterloo, IA (EPG Exhibiting)

**Oct 3-5 Kansas SWANA Conference**  
Wichita, KS (The Reich Co Exhibiting)

**Oct 27 Arizona SWANA Vendor Showcase**  
Location TBD (The Reich Co Exhibiting)

**Nov 1-2 Nebraska SWANA Conference**  
Kearney, NE (The Reich Co Exhibiting)

[info@epgco.com](mailto:info@epgco.com) | 800-443-7426 | [www.epgco.com](http://www.epgco.com)



[View as Webpage](#)