



EPG CONNECTION

YOUR SOURCE FOR ENVIRONMENTAL
& INDUSTRIAL SOLUTIONS



October 2022

Issue No. 147

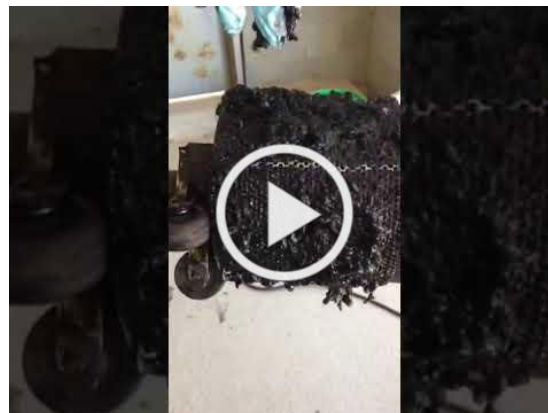
In This Issue: Haunted by Clogged Pumps?

EPG Insights

Over the years, we've guided numerous customers through blockage issues and serviced all types of clogged pumps. We've seen all sorts of precipitate, substances we might describe as **Crusty, Stringy, Sticky, Slimy, and Gooney**.

In one particular case we affectionately named the substance "**Flubber**" because it seemed to have a life of it's own.

Check out the [Video Clip](#)



BLACK GOO **RUST**
LIME **Calcite** **OIL**
MICRO-ORGANISMS
GYPsum **ASH** **CORROSION**
CALSIUM CARBONATE **SILT**

In general, the conditions causing clogged pumps and discharge pipes can simply be the result of the environments the pumps live in and may be unavoidable. There are some things that can be done to help minimize down time after installation and several things to consider during the design phase that can be effective in preventing or minimizing clogs as well.

Pre-Construction Prevention

- Proper cell design
- Proper pump sizing

Post-Install Solutions

- Adhere to proper landfill operation
- Regular pump cleaning
- Routine sump/pipe jetting
- Apply a biodegradable descaling agent
- Larger wheels on sump drainers (more clearance above silt)
- Larger or slotted pump screens
- Add sacrificial anodes to pumps

For help keeping leachate flowing through your pumps and pipes call **1-800-443-7426** or send us an email at info@epgco.com

[Email EPG](#)



[Contact EPG](#)

To consult with an Applications Specialist call 1-800-443-7426 or email us at info@epgco.com



Articles on Landfill Clogging

Here are a few articles from industry professionals and publications on the subject. Statements and opinions in these articles belong to the respective authors and may not reflect EPG's stance(s) on the subject matter.

MSW Management - [Leachate Clogging Dynamics](#)

Waste Advantage Magazine - [Bio-Geo-Chemical Clogging Pt1](#) - [Pt2](#)

SCS Engineering - [Prevent Sump Clogs - Collection Pipe Maintenance](#)

Upcoming Events

*This list includes EPG and Sales Representative events.
We will do our best to keep the list accurate when published.*

Oct 18-19 MN Water Resource Conf.
St. Paul, MN (EPG Exhibiting)

Oct 21 Arizona SWANA Chapter Conf.
Queen Creek, AZ (The Reich Co. Exhibiting)

Nov 2-4 Nebraska Cornhusker SWANA Chapter Conf.
Kearney, NE (The Reich Co. Exhibiting)

Oct 3-5 Iowa Recycling & Solid Waste Conf.
Bettendorf, IA (EPG Exhibiting)

Dec 1-3 MN Assoc. of Watershed Districts Conf.
Alexandria, MN (EPG Exhibiting)

Feb 22-24 Wis. Integrated Resource Mgmt. Conf.
Green Bay, WI (EPG Exhibiting)

info@epgco.com | 800-443-7426 | www.epgco.com



[View as Webpage](#)