



EPG CONNECTION

Your Source for Environmental
& Industrial Solutions

June 2022

Issue No. 143

In This Issue:

Preventive Maintenance | Pressure Gauges | Conference Schedule

EPG Solutions

As summer approaches, facilities and staff are extremely busy. Preventive measures often take a back seat to day-to-day operations. Here is a helpful reminder to take a moment and assess your maintenance programs.

Try to schedule regular inspections to insure the health and performance of your systems and equipment. A pump system can present several indicators something has changed. Here are just a few of those indicators.

- Increases in sump liquid level
- Decreases in flow rate
- Pressure changes
- Pumps running more frequently
- Pumps running longer than usual

Information from cycle counters and elapsed time meters can help gauge operating conditions and system efficiency and alert you of any changes occurring in the system. Cleaning flow sensors and identifying and correcting flow restriction can insure optimum fitness and promote longevity as well.

Expertise in identifying problem sources and their solutions is just a phone call away!

1-800-443-7426

TOP TEN LIST

EPG's Top Ten List identifies useful spot checks for correctable conditions which could lead to unexpected downtime if ignored. Moisture and landfill gases like methane can damage components in just a short amount of time.

1. Change **corrosion inhibitors** every year. Each control panel and breakout junction box EPG manufactures has one installed.
2. Replace **desiccant dryers** when color changes from blue to pink. If the desiccant material has turned white, it is no longer protecting the level sensors internals from moisture.
3. **Seal-offs** should be installed in each conduit run between riser/sump and control panel. *Seal-offs are ineffective unless the damming fiber and sealing compound are in place so be certain this is done.
4. Since **electrical conduit** threads are straight and do not seal, they should be sealed with **Teflon™ tape**. *This does eliminate conduit as a ground so a **separate ground wire** must be installed.
5. Make sure enclosures are **plum and level** to insure doors are straight and seal properly. Inspect doors and make sure they are not bent and keep them closed by **securing ALL latches**.
6. During **inspection** of control panels and breakout boxes, make note of any signs of water stains, discoloration of fuses, wiring, or terminal corrosion. These are signs that the enclosure has been compromised by moisture and/or gas.
7. Any evidence of **insect or small animals** inside the enclosure should also be addressed.
8. EPG recommends that control panels be mounted in a secure fashion at least **15' from the riser or sump and 36" above grade** to the bottom of control panel. If in the design stage, please strongly consider these recommendations.
9. Reinstall and/or replace **cord restraints** and replace **o-rings** of Meyer's hubs after any cable repair or maintenance is performed.
10. Use **water-proof wire connectors** where ever wire connectors are needed.

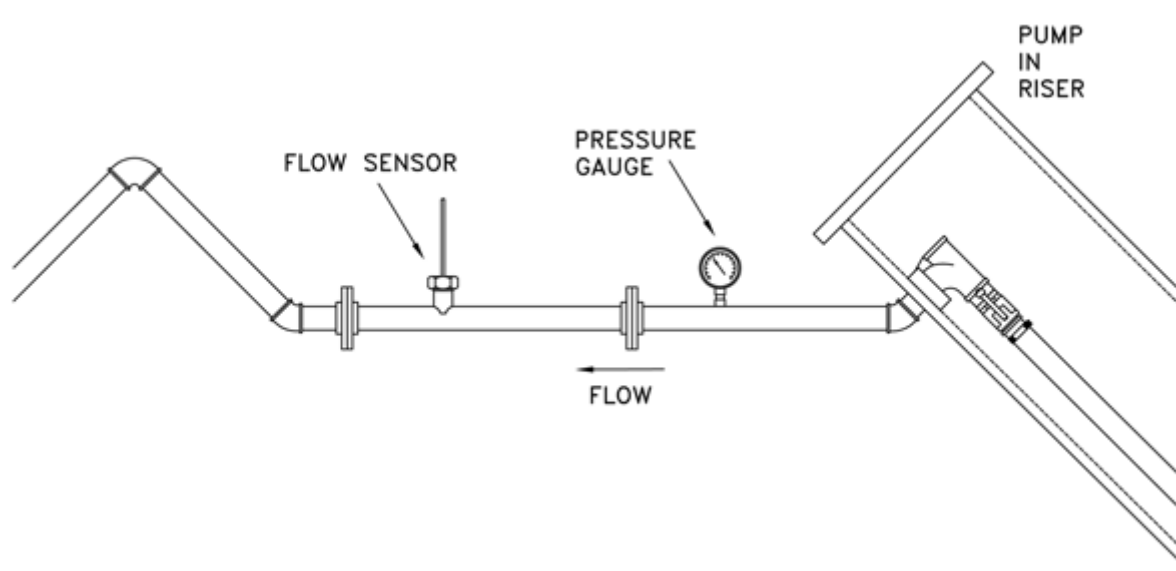
EPG Products

Using Pressure Gauges

Pressure Gauges can be used to monitor and verify pump health. Normal pressure and flow is determined by a pumps performance curves and should be referred to when diagnosing flow issues. A pressure gauge is most effective when used in conjunction with a flow meter.

What can a Pressure Gauge tell you?

- Low Pressure / Low Flow may indicate:
 - A worn pump
 - Starved suction - little or no liquid
 - Dry running
- High Pressure / Low Flow may indicate:
 - A plugged pipe



Above: Suggested location of pressure gauge placement.

Consult with an Applications Specialist **1-800-443-7426** or email us at info@epgco.com for more information.

EPG On-Demand Webinars

Featured On-Demand Webinar

Topic: [Gauges & Meters](#)

Length: [12 Minutes](#)

This webinar covers some of EPG's optional gauges and controls to monitor pump system health. We discuss utilizing level and flow sensors, elapsed time meters, cycle counters, and pressure gauges.



[Watch Webinar](#)

Industry Events

This list includes EPG and Sales Representative events. We will do our best to keep the list accurate when published.

July 10-12 Missouri Waste Control Coalition

Osage Beach, MO (The Reich Co. Exhibiting)

Aug 22-24 Wyoming SWANA & Recycling Conf.

Powell, WY (The Reich Co. Exhibiting)

Sept 20-23 Kansas SWANA Conference

Wichita, KS (The Reich Co. Exhibiting)

info@epgco.com | 800-443-7426 | www.epgco.com



[View as Webpage](#)