



# The EPG Connection

Your Resource for Landfill, Environmental, and Industrial Solutions!

November 2021

Issue No. 136

**In This Issue: Holiday Hours | Our Pledge To You | Clean, Repair, and Upgrade!**

## EPG Holiday Hours

Wishing you a Happy Thanksgiving from all of us here at EPG!

### EPG's office will be closed on these days:

Nov. 25 and 26 (Thanksgiving Holiday)

Dec. 24 (Christmas Holiday)

Dec. 31 (New Years Holiday)



## Our Pledge To You

As EPG and many industries in general continue to experience delays and back orders due to supply chain interruptions and material/labor shortages, we pledge to:

- Seek ways to expedite your orders
- Search relentlessly for viable substitutions wherever possible
- Do our best to keep you informed of any progress where applicable

We understand the challenges you face and appreciate your patience and loyalty. EPG Companies, Inc remains committed to your satisfaction and our promise is to continue to do our best under these circumstances.

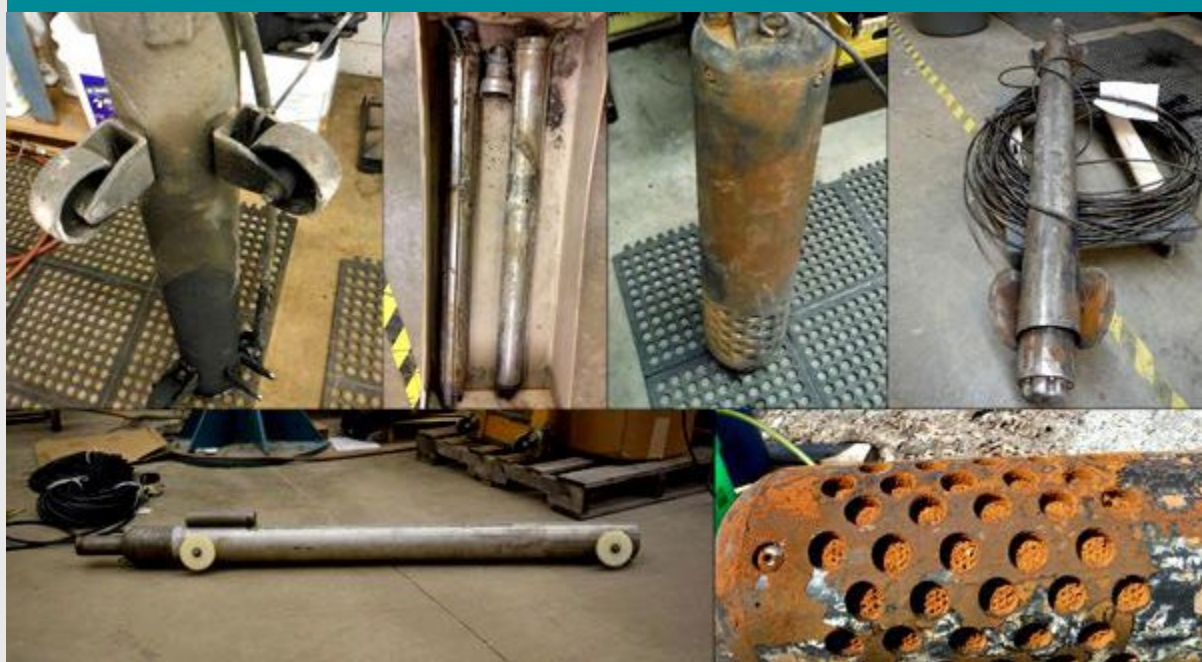
## Equipment Repair Service

### Let EPG help you minimize downtime!

In addition to providing unrivaled support and service for our own equipment, we offer cleaning, repair, and upgrades for other manufacturers pumps & controls at competitive rates and quick turnaround. Try us out!



**We can service most pneumatic pumps, various knock-off electric pumps and even one-of-a-kind monstrosities. Chances are, you'll end up with a better pump than you started with!**



**To arrange repair service call [1-800-443-7426](tel:1-800-443-7426) or email us at [info@epgco.com](mailto:info@epgco.com) to receive an RMA# and shipping instructions.**

## Industry Events

*This list of events is updated each month.  
We will do our best to keep the list accurate when published.*

TBD

[info@epgco.com](mailto:info@epgco.com) | [800-443-7426](tel:800-443-7426) | [www.epgco.com](http://www.epgco.com)



[View as Webpage](#)