

EPG Connection

Your Resource for Landfill, Environmental, and Industrial Solutions!

www.epgco.com

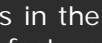
1-800-443-7426

Oct. 2015

Issue No. 64

In This Issue
EPG Service School
Your Complete Landfill & Environmental Solution Source
Upcoming Events
Quick Links
EPG Website
Contact Us
Request A Catalog

Join Our Mailing List



EPG Companies Inc. specializes in the design and manufacture of **landfill leachate pumps & controls, sump drainers, remediation equipment, telemetry hardware** and **SCADA systems, Odor & Gas Control**, and other environmental and industrial products.

Announcement!

EPG's 2016 Service School dates have been determined. The Pumps & Controls Class will take place April 11-13 followed by the Advanced Class April 13-15. Classes do not overlap on the 13th so you can attend both if you wish.

Classes are conducted at EPG's manufacturing facility in Maple Grove, MN and include classroom discussion, presentations, hands-on training, networking opportunities, meals, lodging (2-nights included in the registration fee for each class), applicable test equipment, instruction manuals and SWANA CEUs.



EPG will be attending several events over the next several months. We will update the [schedule](#) below in each newsletter.

As always, EPG welcomes your feedback. If you have any comments or questions, feel free to contact us at info1@epgco.com.

Sincerely,
EPG Companies Inc.
www.epgco.com



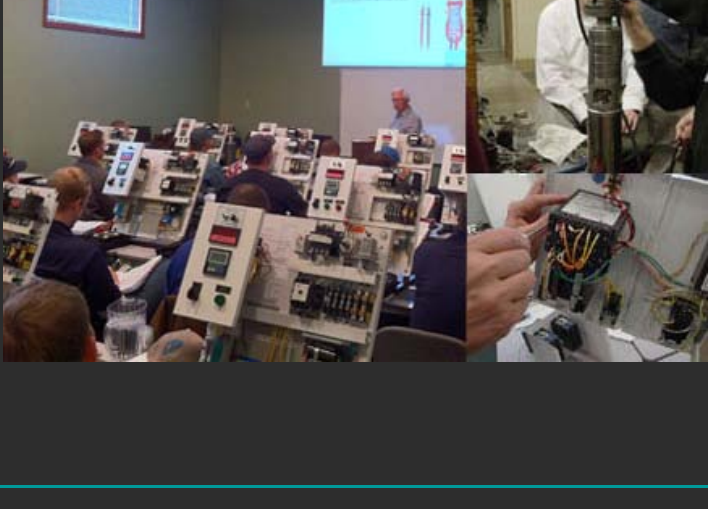
Education & Training - EPG Service School

For 19 years, EPG has served over 500 attendees in a small group setting. Our education and training classes are applicable for all who are involved with the design, maintenance, and/or installation of Liquid or Gas Handling Systems, Remediation Systems and/or SCADA and Data Acquisition Systems.

EPG's on-site classroom includes live control panels allowing students to get hands-on experience programming level and flow meters, component installation, and system troubleshooting. In addition, each student has the opportunity to tear down and rebuild an EPG SurePump, providing invaluable knowledge for use in the field. We believe EPG's Service School offers a unique learning environment, unmatched in our industry.

The following topics are covered in both comprehensive classroom and hands-on settings:

- Use of Test Meters
- Motor & Electricity Basics
- Level & Flow Meters
- Pump Basics
- Pump Controllers
- Control Panels
- Installation & Start-Up
- Operations & Maintenance
- Grounding
- Safety Issues
- Telemetry
- Arc Flash/SCCR/PPE
- Flare Maintenance
- Pneumatic Pumps
- Piston Pumps
- Landfill Gas

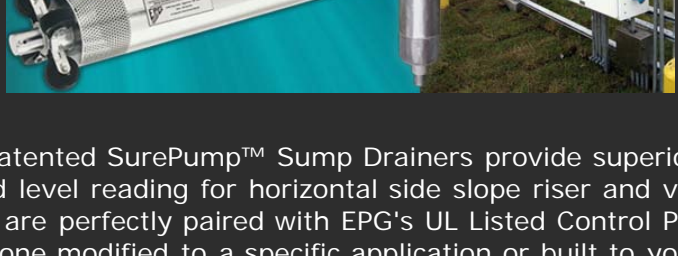


Download the 2016 Service School Registration Form

Pumps & Controls Class (24 spaces) April 11-13, 2016
Advanced Class (12 spaces) April 13-15, 2016

* Receive up to 10 Continuing Education Units through SWANA (Solid Waste Association of North America)

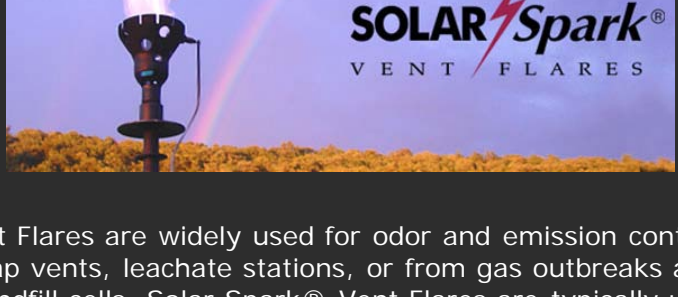
EPG - Your Complete Landfill & Environmental Solution Source



EPG Companies' patented SurePump™ Sump Drainers provide superior performance and accurate liquid level reading for horizontal side slope riser and vertical sump applications. They are perfectly paired with EPG's UL Listed Control Panels. Whether it's a standard panel, one modified to a specific application or built to your design specifications, all control panels are designed to be a cost-effective integral part of your system that meets your specific control needs.

With over 10,000 installations worldwide, and over 25 years of application experience, look to EPG Companies Inc. as your partner in providing innovative and cost-effective landfill, remediation and other environmental equipment solutions.

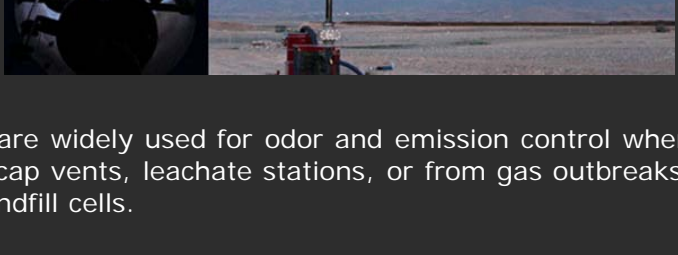
For more info click [HERE](#).



Solar Spark® Vent Flares are widely used for odor and emission control at passive outlets, such as cap vents, leachate stations, or from gas outbreaks at the surface of active or closed landfill cells. Solar Spark® Vent Flares are typically used on landfill gas vents, wells, or leachate system clean-out lines to combust flammable gases.

Solar Spark® Vent Flares combust flammable gases at low ambient pressure without the need for blowers or external power.

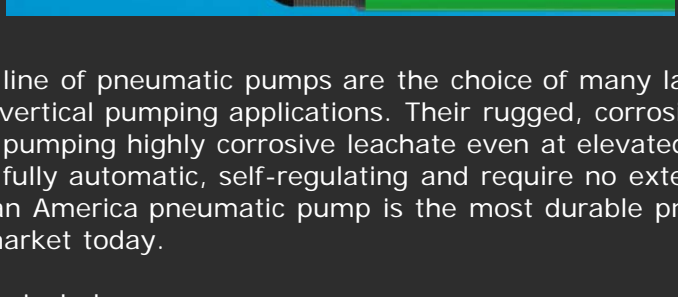
For more info click [HERE](#).



LTL Biogas Flares are widely used for odor and emission control when vacuum assist is required, such as cap vents, leachate stations, or from gas outbreaks at the surface of active or closed landfill cells.

These units are ruggedly constructed for long life and feature solar-powered continuous ignition with very low maintenance requirements. Skid and trailer mounting options are available to adapt to any situation.

For more info click [HERE](#).

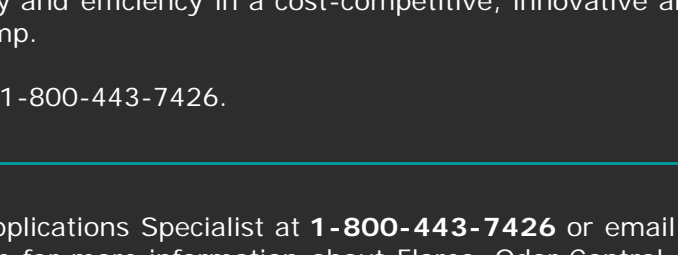


Viridian America's line of pneumatic pumps are the choice of many landfill managers and operators for vertical pumping applications. Their rugged, corrosion resistant design is ideal for pumping highly corrosive leachate even at elevated temperatures. In addition, they are fully automatic, self-regulating and require no external form of control. The Viridian America pneumatic pump is the most durable pneumatic pump available on the market today.

Typical applications include:

- Vertical extraction wells
- Landfill gas extraction wells
- Condensate sumps
- Recovery wells at remediation sites

For more info click [HERE](#).



The rugged ATZ pneumatic top-drive piston pump is designed to pump almost any fluid, under the most difficult operating conditions, while eliminating the need for down-well pneumatic lines or electric motors. The design incorporates an optimal blend of power, reliability and efficiency in a cost-competitive, innovative and easy to operate piston pump.

For more info call 1-800-443-7426.

Consult with an Applications Specialist at **1-800-443-7426** or email us at info1@epgco.com for more information about Flares, Odor Control & Fugitive Gas Solutions, and Pneumatic Pump Systems.

Upcoming Events

EPG will have representation at the following SWANA and industry related events:



Apr 4-7 [SWANA's Landfill Gas & Biogas Symposium 2016](#)
Charleston, SC (EPG Exhibiting)

April 11-15 [EPG Service School](#)
Maple Grove, MN

August 22-25 [SWANA's WASTECON 2016](#)
Indianapolis, IN (EPG Exhibiting)