



In This Issue

Sump Drainer History

Diamond Scientific Blog

Upcoming Events

Quick Links

EPG Website

Contact Us

Request A Catalog



Dear Mike,

The origin of the EPG SurePump™ began during the early 1980's. The vertical sump drainer was originally developed for the remediation market to pump hydrocarbons. The innovative design allowed the vertical sump drainer to pump down farther than other pumps on the market. [\(story continued below\)](#)

Diamond Scientific, EPG's sales rep for Florida, Georgia, Alabama and Puerto Rico, blogs about landfill pumps designed specifically for use in hazardous environments. [Click to read more.](#)



EPG attends several events each calendar year. We will update the **schedule** below in each newsletter. Hope to see you at the next event!

As always, EPG welcomes your feedback. If you have any comments or questions, feel free to contact us at info1@epgco.com.

Sincerely,
EPG Companies Inc.
www.epgco.com



Product lines available from EPG Companies Inc.



EPG Companies Inc. specializes in the design and manufacture of landfill leachate pumps & controls, sump drainers, remediation equipment, telemetry hardware and SCADA systems, Odor & Gas Control, and other environmental and industrial products.

Sump Drainer History

The origin of the EPG SurePump™ began during the early 1980's. The vertical sump drainer was originally developed for the remediation market to pump hydrocarbons. The innovative design allowed the vertical sump drainer to pump down farther than other pumps on the market.

EPG was approached by an engineer from Wisconsin in the late 1980's to find or develop a pump for a new landfill design that utilized side slope riser pipes in Indiana. This was in anticipation of more stringent regulations expected to take effect soon (Subtitle D).

After analyzing the problem, EPG designed a pump with skids, so either horizontal or inclined operation was possible. By ensuring that the leachate was drawn past the motor, EPG prevented the pump from overheating.

The design was used but complaints from the field said installing the pump was akin to "pushing a chain down the street". The design was rethought and four wheels were put at each end (90° spacing). This allowed the pump to roll easily down the riser pipe and into the sump.



These innovations led EPG to apply for and receive US Patents #4,966,534 and #4,992,030. These patents cover the level sensor mounted along the central axis of the sump drainer and the sump drainer supplied as a sealed unit.

The sump drainer design is simple, yet effective. Since the unit is sealed, all the leachate is drawn through the bottom intake screen, past the motor and into the pump's intake. The pump is controlled by a submersible level sensor that will turn the pump on and off by sensing the liquid level above the sensor. The sump drainer is equipped with a "vent valve" to vent any air present in the sump drainer and to prevent air lock.

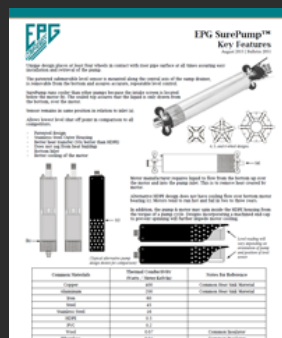
EPG has always been sensitive to comments from the people who use the equipment. These comments have led to several improvements in the design. The first improvement was to replace the retainer clips with retainer pins to better hold the wheels on the axles. The next improvement added durability to the vent valve hose barb by changing it from nylon to stainless steel. Another improvement was to reinforce the wheel assemblies to better support the weight of larger pumps. We then increased the sump drainer wheel diameter for better clearance at HDPE welds in riser pipes. A small diameter Sump Drainer was developed for 6" PVC pipe applications. Finally new impellers were designed for better efficiency.

The addition of a level sensor mount permitted removal and replacement of the sensor without dismantling the sump drainer. Recently, a center-mounted level sensor became available on vertical models as well.

EPG continues to improve upon design and manufacturing processes to bring you the highest quality, longest lasting equipment available.

The EPG SurePump™ provides superior performance for both horizontal side slope riser and vertical sump applications. Both models are available in a wide range of flow rates, discharge heads and motor voltages.

The SurePump™, constructed of stainless steel, provides resistance to aggressive environments. Bulletin 2051, available for download here, highlights distinguishing features and why these features matter in comparison to alternative options.



[Download the SurePump Key Features Bulletin Here](#)

EPG SurePump Key Features

Consult with an Applications Specialist at **1-800-443-7426** or email us at info1@epgco.com for more information.

Landfill Pumps Designed Specifically for Use in Hazardous Environments

Diamond Scientific blogs about landfill pumps designed specifically for use in hazardous environments.

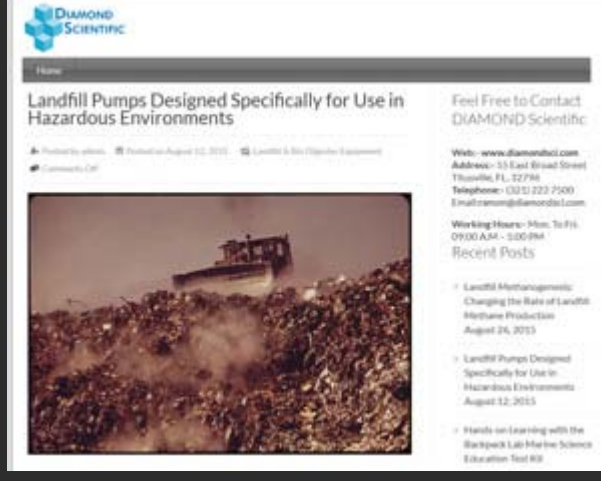
"Landfills are harsh and hazardous environments. They are subjected to heavy earthworks; exposed to the elements, including harsh sun and rain; as well as toxic and highly corrosive chemicals, and explosive natural gases that consist largely of methane."

[Continue Reading here](#)

Diamond Scientific is your best source for landfill pumps, controls, and monitoring solutions in Florida, Georgia, Alabama and Puerto Rico.

They also specialize in the following environmental products and services:

- Geomembranes
- Erosion Protection
- Groundwater Well Applications
- In Situ & Ex Situ Soil and Sludge Remediation
- Landfill Methane Gas Applications
- Permeable Reactive Barrier (PRB) Technology
- Sealable Steel Sheet Pile
- Wheel Wash Systems
- Water Systems
- and more.



Ramon (Ray) Rivera
Diamond Scientific
Phone: 321-223-7500
E-mail: info@diamondsci.com

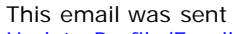
Upcoming Events

EPG will have representation at the following SWANA and industry related events:



2016 (TBD) **EPG Service School**
Classes take place at EPG's manufacturing headquarters in Maple Grove, MN and include classroom discussion, presentations, and hands-on training.

[Forward email](#)



This email was sent to mswanon@epgco.com by news@epgco.com | [Update Profile/Email Address](#) | Rapid removal with [SafeUnsubscribe™](#) | [About our service provider.](#)

