

In This Issue

Is Something Lurking?

New Product Line - Flares

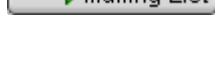
Upcoming Events

Quick Links

EPG Website

Contact Us

Request A Catalog



EPG Companies Inc. specializes in the manufacture of **landfill leachate pumps & controls, sump drainers, remediation equipment, telemetry hardware** and **SCADA** systems and other environmental and industrial products.

Dear Mike,

EPG is sponsoring and exhibiting at SWANA's 2013 Wastecon in Long Beach, CA, September 17-19.



EPG Applications Specialists will be on-hand to answer questions about our pumps & controls, accessories, and biogas flares. EPG Companies Inc. will be located in booth 931 next to the Wastecon Break Zone. Stop and say hello!

Visit the Wastecon website to learn more.



EPG will be attending several events this year. We will update the [schedule](#) below each month.

As always, EPG welcomes your feedback. If you have any comments or questions, feel free to contact us at info1@epgco.com.

Sincerely,
EPG Companies Inc.
www.epgco.com



Is Something Lurking Around Your Pump System?



Did you know unseen issues may be lurking below the surface of your pump & controls system? Avoid being alarmed when they suddenly appear by recognizing, in advance, any changes in the performance or function of that system. EPG offers solutions to monitor performance and operating conditions to help identify and troubleshoot common issues.



Photos of alligator taken during a visit to a Florida landfill.

If you need continuous monitoring of liquid flow, sump or tank levels, EPG has the solutions to help you understand, maintain and improve system conditions. Keeping a log of liquid level, flow rate, and pump starts on a regular basis provides valuable data giving you insight into the state of your pumping systems over time.

Stand Alones

As an integral part of a complete Control Panel or as an individual Stand Alone Unit, EPG Monitoring Systems and their components consistently provide the vital information necessary to identify changing conditions and sustain optimum system performance.



Pictured above are EPG's most popular stand alone units:

- Flow Meter Stand Alone ([FMSA](#))
- LevelMaster™ Stand Alone ([LMSA](#))
- Tank Gauging System ([WNSA](#))

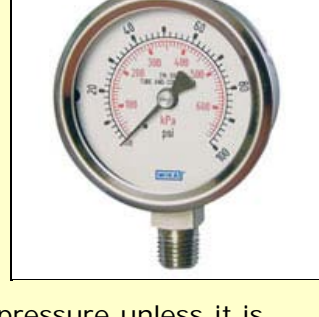
These monitoring functions and more are available as part of our feature rich Control Panel line as well.

Pressure Gauges

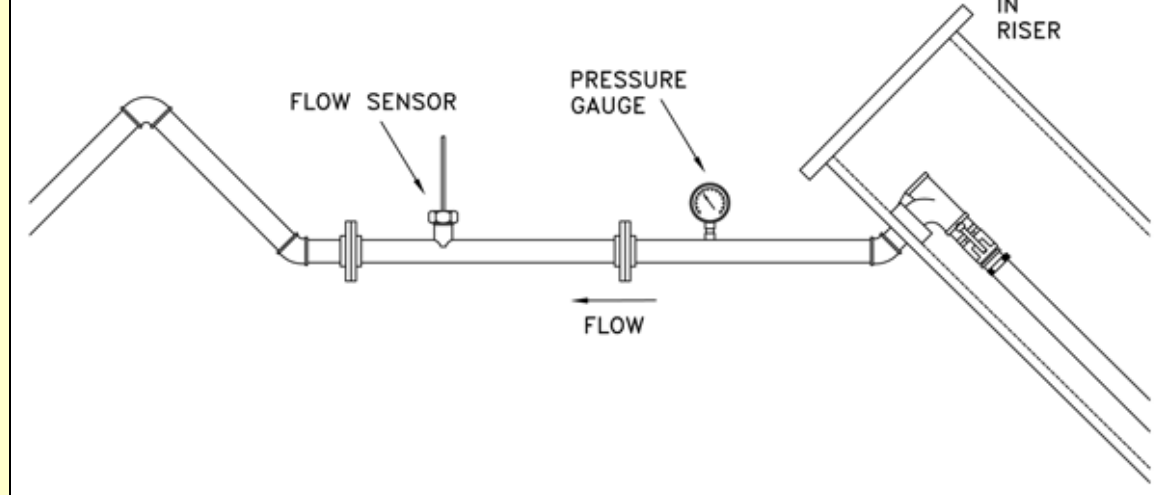
Pressure Gauges can be used to monitor and verify pump health. Normal pressure and flow is determined by a pumps performance curves and should be referred to when diagnosing flow issues. A pressure gauge is most effective when used in conjunction with a flow meter.

What can a Pressure Gauge tell you?

- Low Pressure / Low Flow may indicate:
 - A worn pump
 - Starved suction - little or no liquid
 - Dry running
- High Pressure / Low Flow may indicate:
 - A plugged pipe



A pressure gauge reads the system pressure at the point where the gauge is at in the system. It is not reading pump discharge pressure unless it is mounted directly at the pump discharge.



Consult with an Applications Specialist at **1-800-443-7426** or email us at info1@epgco.com for more information about [Monitoring & Control](#) solutions.

New Product Line - Flares



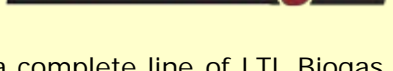
We are pleased to announce that EPG Companies Inc. has become the exclusive distributor of Solar-Spark® Vent Flares throughout the U.S., Canada and Puerto Rico.

For nearly 20 years, The Solar-Spark® Vent Flare has been known as a dependable and economical solution for odor control and gas migration at open and closed landfills as well as other industry sites including oil & gas, bio waste, bio digesters, feed lots, and food processors. The small size, low cost, and ease of installation also contribute to their excellent reputation.



You can view/download flyers for the Solar-Spark® Vent Flare below:

CF-5 (2-90 SCFM Flow Range)	Bulletin 6555
CF-10 (5-140 SCFM Flow Range)	Bulletin 6550



In addition, EPG now offers a complete line of LTL Biogas products including Biogas Flares, Data Stations and Blower Packages.



For more info contact EPG Companies Inc. info1@epgco.com or call **1-800-443-7426**

Upcoming Events

EPG will have representation at the following SWANA and industry related events:



Sept. 17-19	2013 WASTECON Long Beach, CA (Exhibiting)
March 2014	EPG Service School Maple Grove, MN (Dates will be announced later this year)