

In This Issue

Did You Know?

[Installation Checklist](#)

[Upcoming Events](#)

Quick Links

[EPG Website](#)

[Contact Us](#)

[Request A Catalog](#)



EPG Companies Inc. specializes in the manufacture of **landfill leachate pumps & controls, sump drainers, remediation equipment, telemetry hardware and SCADA systems** and other environmental and industrial products.

Dear Mike,

During a recent conversation with a consulting engineer, the topic of quality control during installation was discussed. What types of issues are prevalent? What basic details being overlooked had significant impact on the start-up and operation of the system? How could quality control and start-up personnel be better equipped to avoid common mistakes? Regardless of the qualifications of the personnel, there often was a lack of knowledge regarding the installation of landfill pump & control systems.

EPG includes an Installation Checklist in every O&M. Not only is this checklist a useful resource during the design stage, it can be used as part of a "flight check" process at installation and start-up.

You can [download the Installation Checklist](#) below, along with the Start-Up Checklist and Start-Up Form.

Have questions? Give us a call at **1-800-443-7426** or email us at info1@epgco.com.



EPG will be attending several events this year. See the [schedule](#) below. We will update the schedule each month.

As always, EPG welcomes your feedback. If you have any comments or questions, feel free to contact us at info1@epgco.com.

Sincerely,
EPG Companies Inc.
www.epgco.com



Did You Know?

A control panel built under a UL listing no longer satisfies the requirements of it's UL listing if it is modified in any way. Modifications can be made if the modification and parts used are reviewed by the holder of the UL file (E) number.

EPG does this on a daily basis under our Field Mod Program. This consists of step-by-step written instructions, new revised cad drawings and labels, both of which come ready to be applied to the electrical enclosure, and either parts required to make modification or a list of parts to be used. All documentation is associated with the original work and filed for future reference.

Common panel modifications include:

- Pump changes (horsepower)
- Dry contact outputs
- Additional instrumentation
- Changes in voltage and/or phase
- Modification to wiring
- And much more

By using the EPG Field Mod Program you maintain your UL listing and have the added benefit of telephone service support.



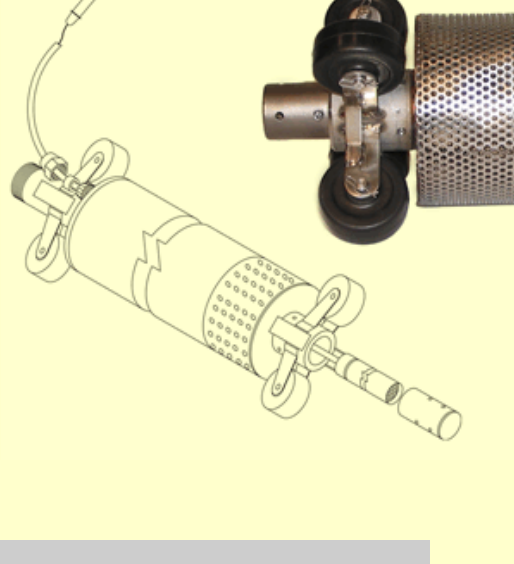
To find out if your control panel supplier is UL Listed, ask for their E # or visit the [UL Online Certification Directory](#) to find out.

EPG UL # [E219136](#) - Industrial Control Panels Relating to Hazardous Locations

Did You Know?

10 years ago the EPG SurePump was redesigned to allow for replacement of the integrated level sensor without disassembling the pump. The design was even awarded a patent!

- Allows for complete removal and replacement of level sensor
- Provides access for cleaning or inspection of level sensor
- Saves time and money
- Easy to follow, comprehensive instructions available



Download our Level Sensor Replacement Instructions [Bulletin 0691a](#)

Installation Checklist

The success of a Pumps & Controls installation begins at the design stage of each project and carries through to that very moment a new pump is cycled for the first time.

If you are the consultant, you are charged with meeting regulator requirements, fulfilling the needs of the landfill, and doing so in a cost effective manner.

As the contractor, you may not be asked to take ownership of the system but your reputation is riding on a system that functions as intended. Your attention to detail during the installation will pay off in the future.

Regional engineers and operations people don't necessarily need to become experts, but they should have a good understanding of their pumping systems and be able to provide a basic level of support or troubleshooting.



-Installation "Dos"-

- Tailor specifications to each job
- Use qualified and experienced installers & electricians
- Establish good electrical ground
- Adhere to color coding of wiring
- Design properly sized force main
- Include air release valves in force main
- Install pressure gauge in pump discharge line

-Installation "Don'ts"-

- Over size pumps
 - Excessive flow rate creates high velocity in sump, pulling in fines
 - Excessive pump head can lead to overload and vibration
- Place control panel too close to riser or sump
- Forget to use seal-offs & not potting them
- Leave excess cable and hose in sump or riser



After running first few days:

- Check that adequate grounding remains
- Check voltage
- Look for signs of power surges (lightning)
- Installation problems may be traced back to:
 - Poor connections
 - Mishandled parts
 - Pump flow rate too high for sump design
 - Pumps clogged with HDPE chips or sand

After several months of service:

- Check that adequate grounding remains
- Check voltage
- Look for signs of power surges (lightning)
- Do pumps perform as expected?
- Is there noticeable Gas Effect in play (unreliable level readings)?

Download our Installation Guide [Bulletin 0610a](#)

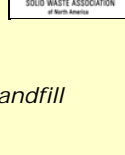
Download our Start Up Checklist [Bulletin 0620b](#)

Download our Installation Record [Form 200](#)

Call **1-800-443-7426** or email us at info1@epgco.com with your "Installation" questions.

Upcoming Events

EPG will have representation at the following SWANA and industry related events:



- May 5-8 **Federation of NY Solid Waste Association**
Lake George, NY
(Exhibiting & Presentation - "Using Electric Submersible Pumps & Controls in Landfill Gas Collection Systems")
- May 9 **SWANA SC Palmetto Chapter - Spring Conference**
Pawleys Island, SC
(Presentation - "Arc Flash and Grounding - Safety, Compliance, and Good Practices")
- Sept. 17-19 **2013 WASTECON** Long Beach, CA
(Exhibiting)

[Forward email](#)



This email was sent to mswanson@epgco.com by news@epgco.com | [Update Profile/Email Address](#) | Instant removal with [SafeUnsubscribe](#)™ | [Privacy Policy](#).

EPG Companies Inc. | 19900 County Road 81 | Maple Grove | MN | 55311