

June 2003

Above Grade Valve Shaft Finishing Kit

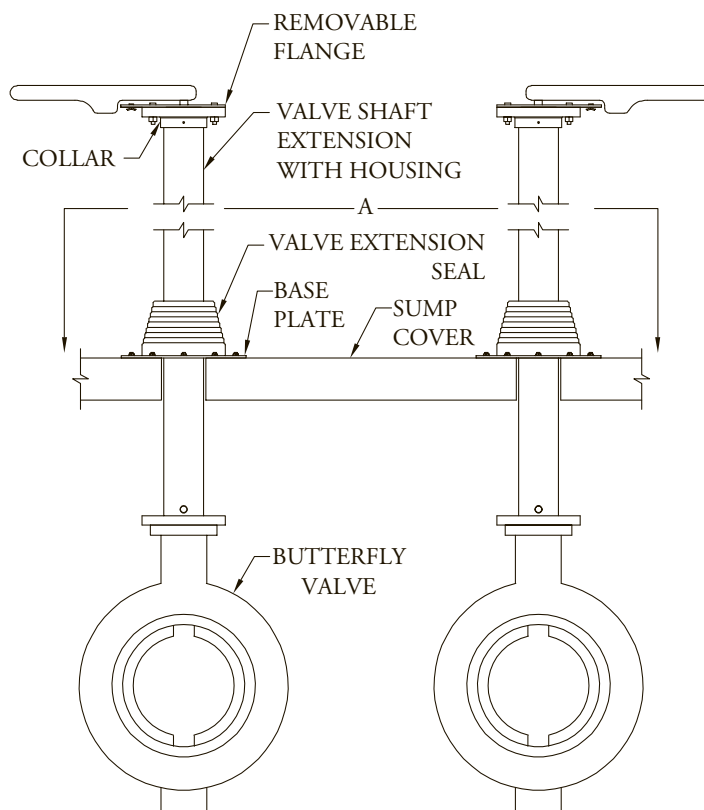
The EPG Above Grade Valve Shaft Finishing Kit is used to seal off gas that could migrate through the hole that was created in the sump cover during the installation of a Valve Shaft Extension Kit.

COMPONENTS

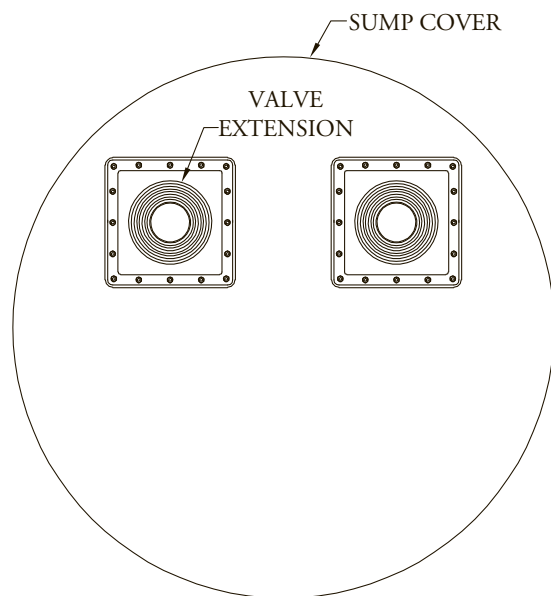
- Base plate
- Screws
- Seal (can be cut to fit any size extension)

To install the finishing kit:

- 1) Cut hole in seal. Remember to make sure hole is still small enough to create a good seal.
- 2) Slide seal over extension housing.
- 3) Fasten seal base plate to sump cover.



SIDE VIEW



VIEW "A"