

Your Resource For Environmental Pollution Solutions!

Stainless Steel Discharge Adapters

IN THIS ISSUE

Page 2

Sales Rep Highlight

S.S. Check Valves

Page 3

Condensate Separators

EPG People

Page 4

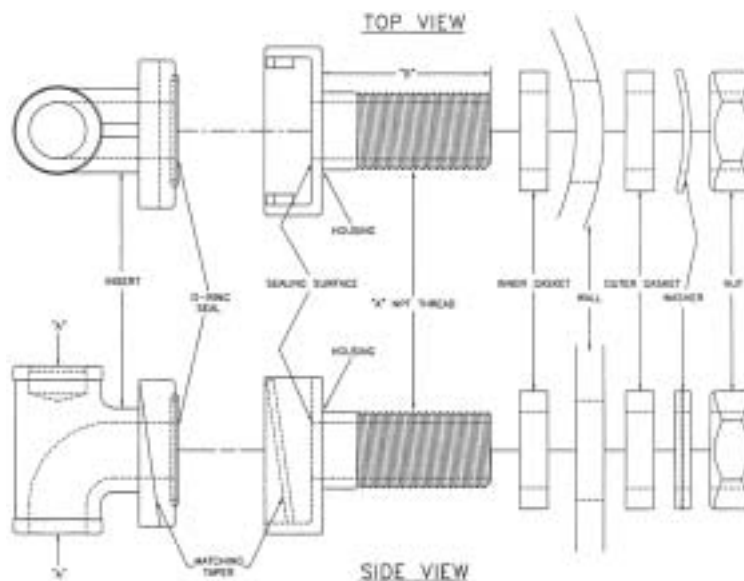
Product Highlights

**EPG Companies
will be at
WASTECON 2002
Booth 1433**

EPG's Model NW Stainless Steel Discharge Adapters are designed for leachate, monitoring, and remediation piping applications. The discharge adapters fasten through a riser or sump wall to allow for quick and easy pump connections and disconnections.

Features include:

- Solid 304 Stainless Steel construction
- Insert and housing have tapered slide fittings and O-ring seals, to maximize liquid-tight slip joint sealing
- Designed for maximum service life and ease of maintenance
- Built in 90° elbow with blind top that has female threads to accept threaded pipe to facilitate easy removal
- Reduces the need for personnel to enter hazardous locations to make pump connections and disconnections
- EPDM gasket for inner and outer wall with a washer and lock nut to make a gas tight seal
- Extended length discharge allows adapter to fit through 0.25" to 3" material wall thickness
- 1", 1.25", 1.5", 2", and 3" NPT sized fittings for pump pipe, lift out pipe, and discharge pipe



MODEL	"A"	"B"	Minimum I.D.
NW1SS	1" NPT	4"	8"
NW1.25SS	1.25" NPT	4"	8"
NW1.5SS	1.5" NPT	4"	8"
NW2SS	2" NPT	5"	8"
NW3SS	3" NPT	6.25"	12"

EPG COMPANIES INC.
19900 County Road 81
Maple Grove, MN 55311
Phone (763) 424-2613
800-443-7426
Fax (763) 493-4812
www.epgco.com

If you have a current application or would like more information about EPG products and capabilities, please call us at 800-443-7426, fax us at (763) 493-4812, or e-mail us at info@epgco.com.

Sales Representative Highlight

John Cronin, president and founder of XL Pumps, has over three decades of experience as a manufacturer's representative and distributor supplying pumping equipment to municipalities, contractors and pump dealers in Northern California and Nevada.

John explains, "Through the ups and downs of the business our motto has always been "Systems Technology • Guaranteed Results". We developed a "systems analysis" not only to help our customers with difficult pumping problems today, but also providing them with solutions that last. This approach fits very well with the environmental considerations EPG Companies Inc. puts into a project such as the size of pipelines, pumps, valves, meters, controls and wire for the leachate systems...guaranteed. With EPG's product line our goal is to have a stronger presence in

leachate removal systems in Northern California and Nevada.

I have also attended EPG's Leachate Pumps and Controls School. This allowed me to have extensive hands on training with troubleshooting the control panels and the actual assembly and testing of a pump. I learned some valuable information and gained insight on what actually occurs during the manufacturing of a complete leachate pumping system. I also enjoyed the training put on by Ben Determan of Franklin Electric Motors in the motor and electricity basics section of the school.

I thank EPG's President, John Hasslen and Applications Specialist, John Lerdahl, along with the entire EPG staff for the personal attention given to me on my first visit.

XL Pumps also has an extensive library of pump catalogs covering everything from A to Z; including



John Cronin

sewage to solids handling, submersibles to turbines, centrifugal pumps and many other pumps that we can help you with." Please contact John Cronin with XL Pumps at (916) 923-2359 or Fax (916) 923-3405.

Stainless Steel Check Valves

EPG offers check valves ranging from 1/2" to 4" in size. The features include solid 304 stainless steel construction, inline poppet type valve with Viton O-ring set, stainless steel spring for positive closing and low cracking pressure, and a 200 PSIG working pressure. The check valves can be used in both vertical and horizontal positions.



If you see your name here call EPG by 11/29/02 to receive \$25!
Name 1: Randy Price Name 2: Jill Spear

Condensate Filter Separators

Since 1988, EPG has built hundreds of its CS series condensate coalescer separator filter silencers for removal of both particulates and liquid droplets from air streams.

Its unique up-flow design passes the air stream through a mixed media element that coalesces fine liquid vapor into larger droplets which, by gravity, drop to the bottom of the sump. Those droplets that are too small to overcome the velocity of the air stream are trapped in the separator layers of the media until they become large enough to drop out of the air stream at an efficiency of 99%. As the liquid droplets fall back down through the media pack they tend to wash particulate matter out of the five (5) micron filter media carrying the particulates down to the sump.

Inlet sound levels are absorbed in the CS vessel by change in velocity, direction, and recovery trumpet. Typical sound reduction is 8 to 12 dBA.

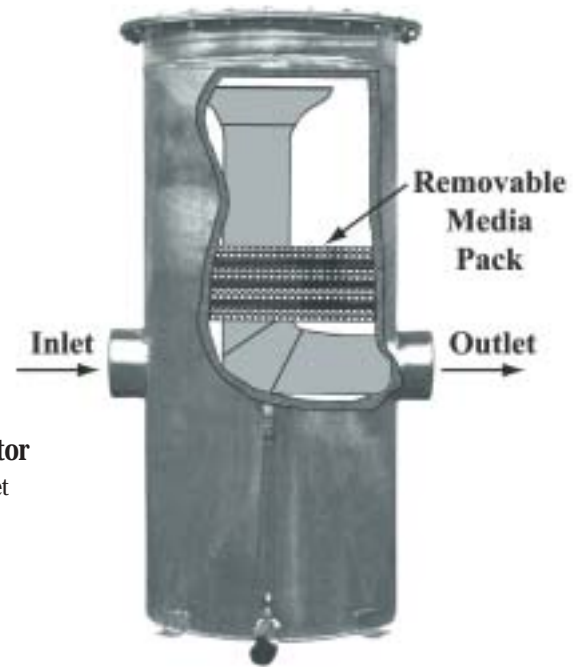
By design, the vessel including media, has a pressure drop of less than 1" W.C. at maximum air flow. This equates to more energy available for the system.

Available accessories include level sensors, automatic drain valve, condensate drain pump, sample ports, level sight tube, vacuum gauge, and integrated UL listed EPG Controller. Other models are also available.



Model CS-16b Condensate Separator

- 16" diameter, 40 $\frac{1}{2}$ " high with mounting feet
- Inlet and outlet ports are 4 $\frac{1}{2}$ " diameter
- Dry weight of the vessel is 130 pounds
- Fifteen (15) gallon sump capacity
- Hot dipped galvanized coated steel
- Access ports for sampling and sensors
- Easy to remove media for cleaning or replacement
- Flow up to 350 SCFM
- Vacuum to 16" HG



Model CS-24a Condensate Separator

- 24" diameter, 55 $\frac{1}{2}$ " high with mounting feet
- Inlet and outlet ports are 6 $\frac{5}{8}$ " diameter
- Dry weight of the vessel is 218 pounds
- Forty (40) gallon sump capacity
- Hot dipped galvanized coated steel
- Access ports for sampling and sensors
- Easy to remove media for cleaning or replacement
- Flow from 350 SCFM to 850 SCFM
- Vacuum to 16" HG

EPG People...

Deward Wilkins has been the shop foreman at EPG for the past nine years. As the shop foreman he oversees the production of EPG's landfill and remediation equipment, ensuring that everything is completed on schedule with the high quality expected of EPG products.

Deward is originally from Texas, then moved to Colorado where he graduated and started working in the

mines doing maintenance on mining equipment. After ten years in Colorado, Deward moved back to Texas where he began his career in the area of manufacturing pumping equipment. Five years later he moved to Minnesota and joined EPG.

Away from work Deward keeps himself busy at home on his hobby farm where he enjoys working with his two horses.



Deward Wilkins

Product Highlights



Conductivity Probes

EPG's conductivity probes are stainless steel electrodes that are commonly used to start and stop a pump. They are weighted, independently suspended, and mounted in small diameter PVC housings. Each probe has 50' (standard) of a color coded lead wire insulated with a waterproof, gasoline, oil and chemical resistant material. A set of three probes is used to start and stop a pump. The high (blue) probe is set at a level where the pump will start. The low (yellow) probe is set at a level where the pump will stop. And the common (brown) probe is set near the bottom of the well. When continuity is made in water between the high (blue) probe and the common (brown) probe, the pump will start. It will stop when the water drops below the low (yellow) probe breaking continuity between it and the common probe. This prevents the pump from running dry, or from pumping petroleum products, which are non-conductive.



Bellows Unit

The EPG submersible level sensor is equipped with a vent tube that runs the entire length of the sensor lead. This vent tube equalizes the atmospheric pressure between the sensor diaphragm and the end of the vent tube. To assure proper operation it is vital that any moisture (especially condensation) be kept out of the vent tube. For years a desiccant dryer cartridge has been installed at the end of the vent tube as the sole defense against preventing moisture migration. EPG has now added a bellows unit, which when used in conjunction with the desiccant dryer, will provide superior protection against condensation migration into the vent tube. In the past, the desiccant dryer tube was open on one end to allow air to pass through the system while moisture was filtered out. This was effective, but the desiccant dryers needed to be replaced more often. The addition of the bellows makes it a sealed system, extending the life of the desiccant dryer cartridge.

EPG Upcoming Events

OCTOBER 28-31
WASTECON 2002
Long Beach, CA

* * *

DECEMBER 4-5
Canadian Waste & Recycling
Toronto, ON

PRSR STD
U.S. POSTAGE
PAID
ROGERS, MN
PERMIT NO.25

P.O. BOX 427
ROGERS, MN 55374

