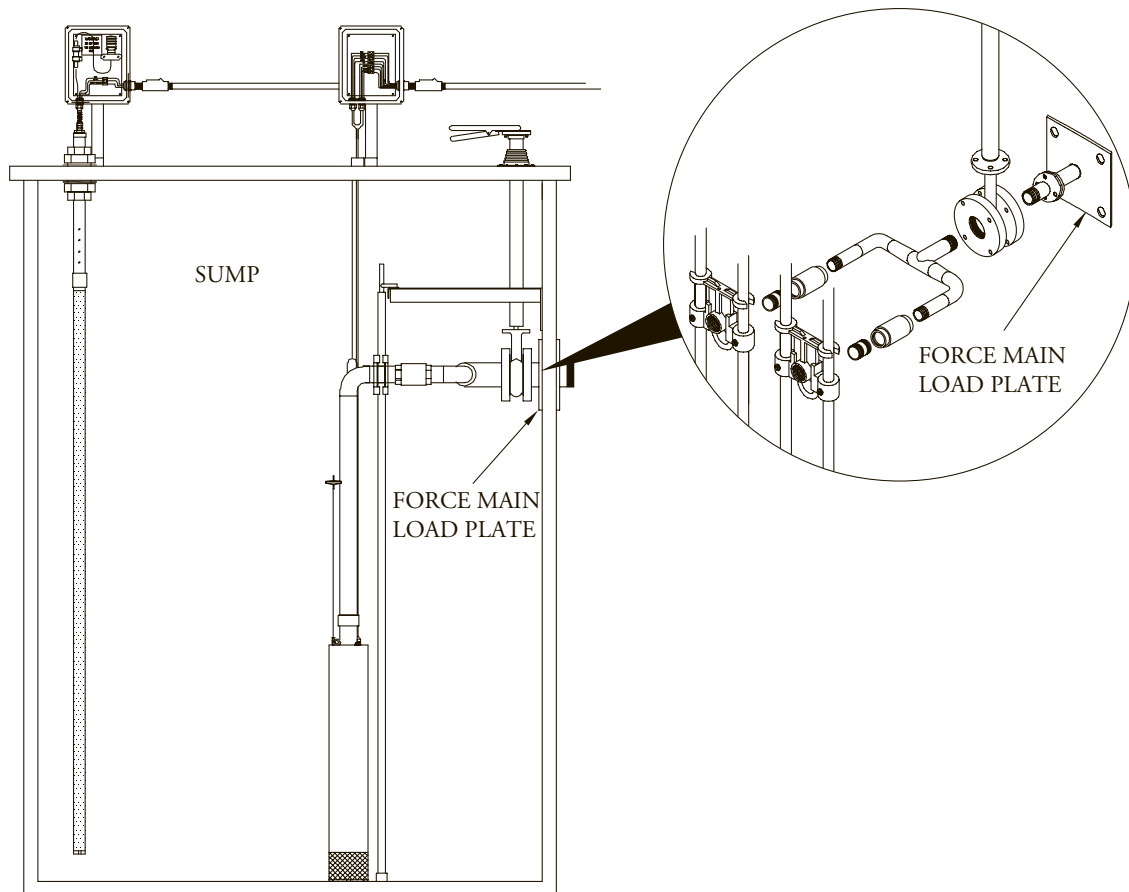


Discharge Force Main Load Plate

- Simplifies installing force main in sumps of any material
- Reduces point loading on sump wall
- Increases piping stability
- Eliminates misalignment of pump and valve connections
- Stainless steel
- Curved to match sump inside diameter and welded to stainless steel SCH 40 pipe
- Package includes load plate/pipe nipple, outside clamping plate and stainless steel fasteners



INSTALLATION

1. Cut hole for discharge pipe.
2. Drill four holes for mounting bolts.
3. Place load plate in place from inside of sump.
4. Seal between hole and discharge pipe.
5. Place outside clamping plate over discharge pipe and bolt in place.